

INDEX OF SHEETS

DESCRIPTION

LAYOUT SHEET
PLAN AND PROFILE
RIGHT OF WAY SUMMARY SHEET
RIGHT OF WAY STRIP MAP SHEETS
DETAIL SHEET - WASTE AREA
COORDINATE CONTROL SHEETS

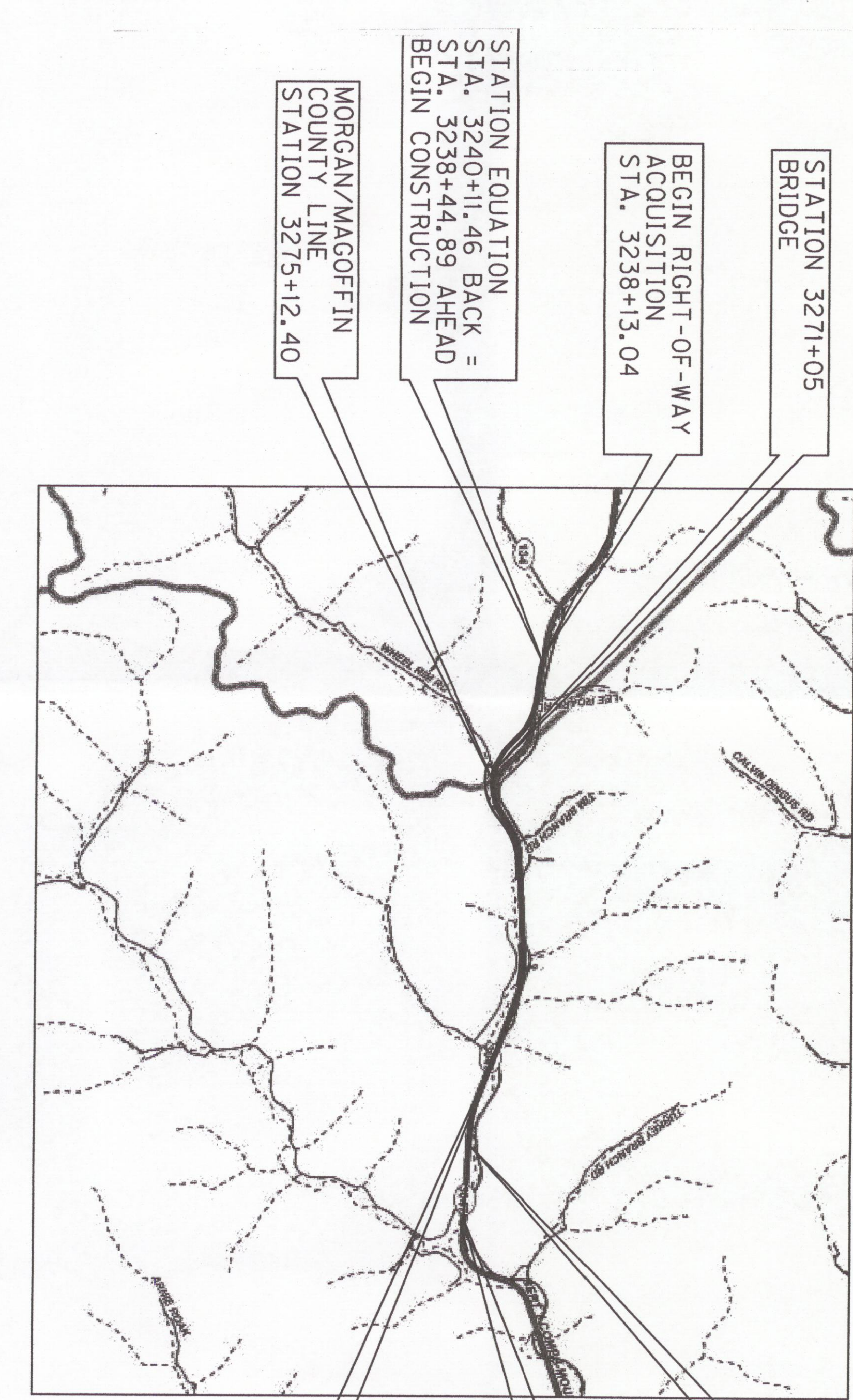
SHEETS NOT INCLUDED IN TOTAL SHEETS
R2A-R2E

Commonwealth of Kentucky
DEPARTMENT OF HIGHWAYS
PLANS OF
PROPOSED PROJECT
MOUNTAIN PARKWAY WIDENING
MORGAN/MAGOFFIN COUNTY
RIGHT OF WAY PLANS



Department of Highways
Mt Parkway Item 10-126-50
LICKING VALLEY RECC W.O.# KY 56-980 & X

Install		Removal	
Poles	Units	Poles	Units
40-2	4	40-2	4
45-2	4	40-4	3
A1	1	A1	2
A4	7	A4	5
AS-2	1	A5	1
E1-2	14	AS-1	1
E3-10	14	AS-2	1
F1-4	14	E1-2	9
M2-1	8	E3-10	9
M5-1	8	F1-2	9
M5-10	2	G10-10KVA	1
		M2-2	7
		M5-1	6
		M5-10	1
		M8	1
		M2B-5	1
Wire	5,020'	Wire	2,660'
1/0 ACSR		1/0 ACSR	3,000'
Pvt. Poles	4		
Public Poles	0		
New Poles	8		
Rem Poles	7		



RIGHT OF WAY PLANS

THIS PROJECT IS A FULLY CONTROLLED ACCESS HIGHWAY.

APRIL 15, 2015

Commonwealth of Kentucky
DEPARTMENT OF HIGHWAYS
COUNTY OF MORGAN / MAGOFFIN

RECOMMENDED BY: MARSHALL CARRIER, PE
PROJECT MANAGER

ITEM NO. 10-126.50
PROJECT NUMBER: FD52 1550 C121 E143 NH0061046
LETTING DATE:

PLAN APPROVED BY: STEVE WADDLE, PE
STATE HIGHWAY ENGINEER

DATE: _____
DATE: _____

E4 Patton, PLLC
CIVIL ENGINEERS • LAND SURVEYORS • LANDSCAPE ARCHITECTS
1000 W. MAIN ST., SUITE 200
LEWISBURG, KY 40361
TEL: 606-338-2888

STATE OF KENTUCKY
ROBERT DARIN HENSLEY
24,263
LICENSED PROFESSIONAL ENGINEER

DESIGN CRITERIA

CLASS OF HIGHWAY INTERSTATE
TYPE OF TERRAIN MOUNTAINOUS
DESIGN SPEED 65 MPH
REQUIRED PSD N/A
LEVEL OF SERVICE N/A
ADT PRESENT (2010) 5,000/6,700
ADT FUTURE (2030) 6,900/10,300
DHW 1,550 (2030)

GEOGRAPHIC COORDINATES

LATITUDE 37 DEGREES 44 MINUTES 47 SECONDS NORTH
LONGITUDE 83 DEGREES 13 MINUTES 59 SECONDS WEST

DESIGNED

% RESTRICTED SD _____
LEVEL OF SERVICE _____
MAX. DISTANCE W/O PASSING _____

PROJECT

LENGTH 13,555.11 LIN. FT. 2.567 MILES
FOR EQUALITIES 166.57 LIN. FT.
NOT INCLUDED

RAILROAD CROSSINGS NO. _____
BRIDGES 360.93, 189.47

MORGAN COUNTY

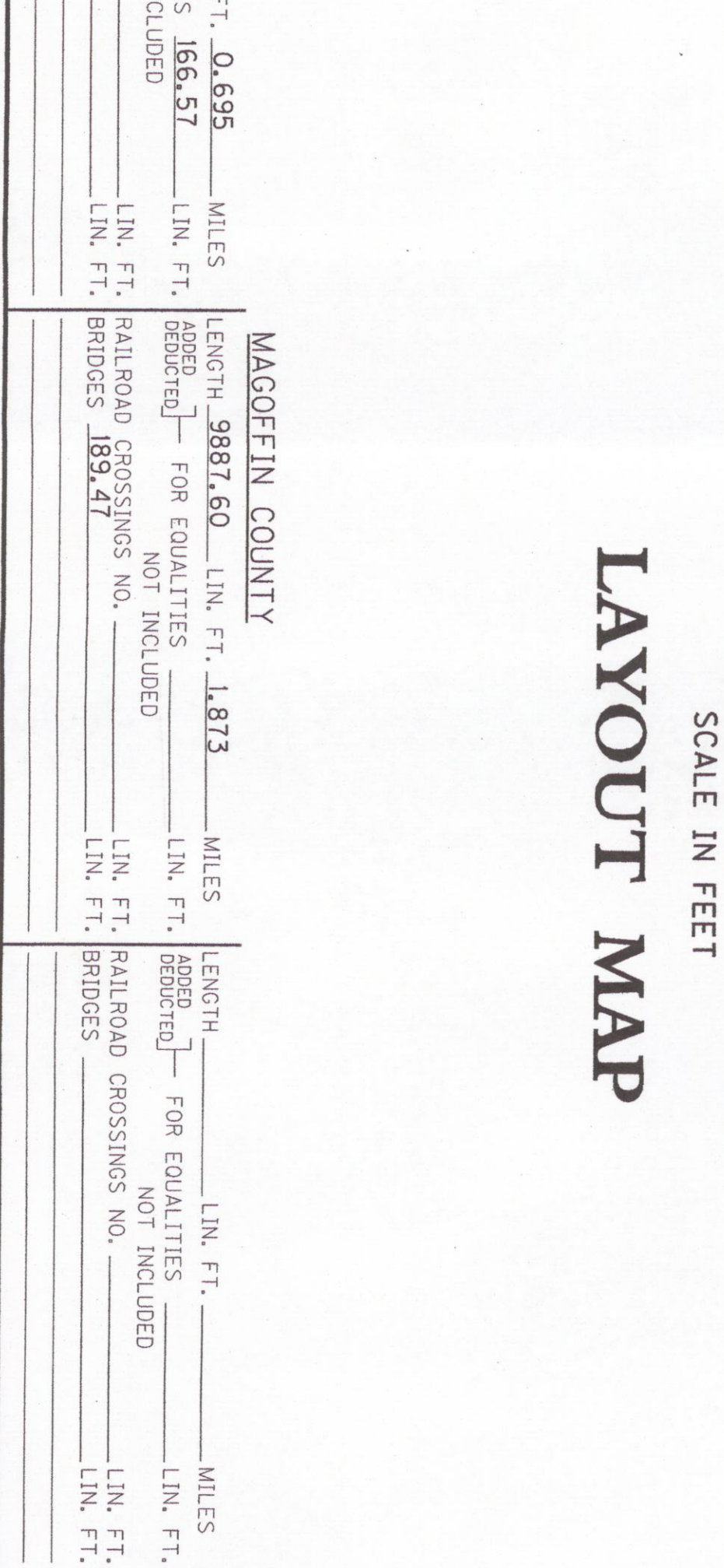
LENGTH 367.51 LIN. FT. 0.695 MILES
FOR EQUALITIES 166.57 LIN. FT.
NOT INCLUDED

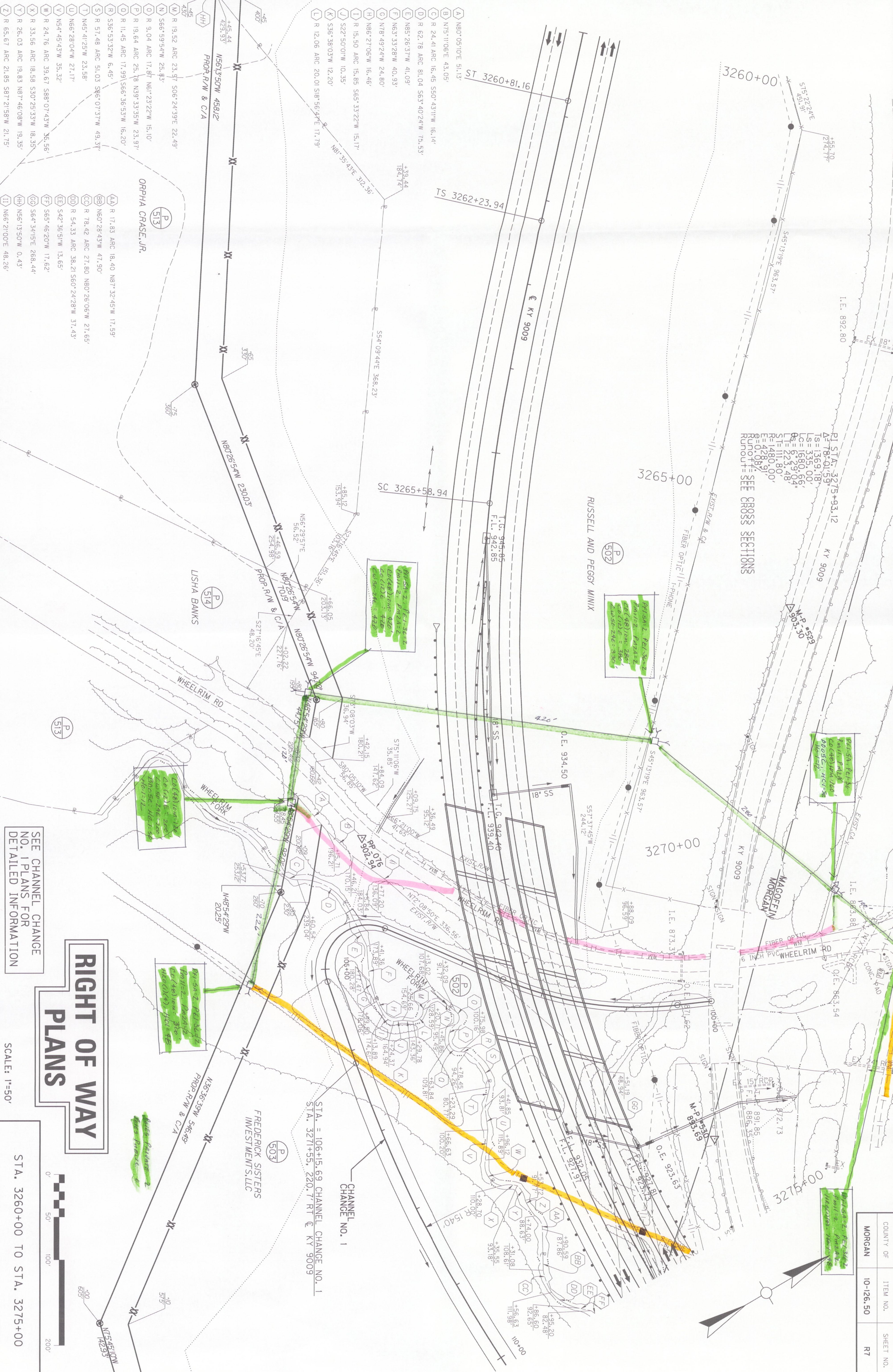
RAILROAD CROSSINGS NO. _____
BRIDGES 360.93

MAGOFFIN COUNTY

LENGTH 9887.60 LIN. FT. 1.873 MILES
FOR EQUALITIES _____
NOT INCLUDED

RAILROAD CROSSINGS NO. _____
BRIDGES 189.47





P.I. STA. = 3275+93.12
 ΔI = 78.0135'
 ΔS = 1569.18'
 ΔE = 335.00'
 ΔL = 1680.66'
 ΔR = 92.5904'
 ΔT = 22.548'
 ΔC = 111.800'
 ΔD = 1480.90'
 ΔE = 0.2891'
 ΔF = 0.2891'
 Runout = SEE CROSS SECTIONS

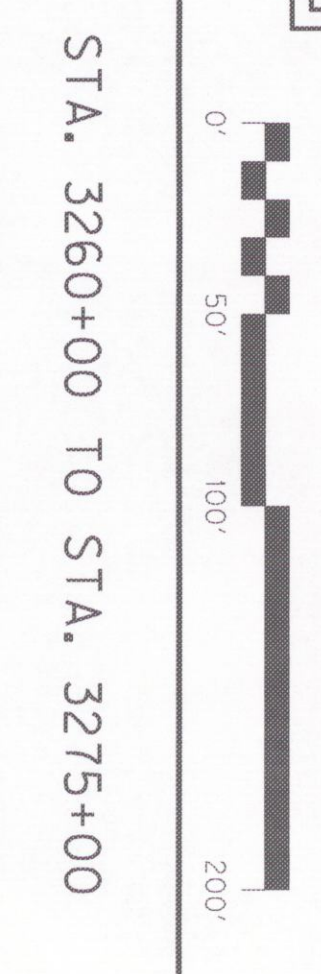
- A N80°05'10"E 51.13'
- B N75°11'06"E 43.05'
- C R 24.41 ARC 16.45 S90°43'11"W 16.14'
- D R 62.78 ARC 81.04 S53°40'24"W 73.53'
- E N85°26'37"W 41.09'
- F N63°33'28"W 40.93'
- G N78°49'24"W 24.80'
- H N86°27'06"W 16.46'
- I R 15.50 ARC 15.85 S65°33'22"W 15.17'
- J S22°50'01"W 10.35'
- K S36°38'03"W 12.20'
- L R 12.06 ARC 20.01 S18°56'47"E 17.79'
- M R 19.52 ARC 23.97 S06°24'39"E 22.49'
- N S66°59'54"W 25.83'
- O R 9.04 ARC 17.87 N61°23'22"W 15.10'
- P R 19.64 ARC 25.18 N39°33'35"W 23.91'
- Q R 11.45 ARC 17.99 S66°36'53"W 16.20'
- R S36°53'32"W 6.45'
- S R 57.48 ARC 51.03 S86°07'37"W 49.37'
- T N45°41'25"W 23.58'
- U N66°28'04"W 27.17'
- V NS4°45'43"W 35.32'
- W R 24.76 ARC 39.67 S88°07'43"W 35.56'
- X R 33.56 ARC 18.58 S30°25'33"W 18.35'
- Y R 26.03 ARC 19.83 N87°46'08"W 19.35'
- Z R 65.67 ARC 21.85 S87°21'58"W 21.75'

- AA R 17.83 ARC 18.40 N87°32'45"W 17.59'
- BB N60°28'43"W 47.90'
- CC R 78.42 ARC 27.80 N80°26'06"W 27.65'
- DD R 54.33 ARC 38.21 S60°24'28"W 37.43'
- EE S42°36'51"W 13.65'
- FF S65°46'20"W 17.62'
- GG S64°34'15"E 288.44'
- HH NS6°13'50"W 0.43'
- II N66°21'00"E 48.26'

SEE CHANNEL CHANGE NO. 1 PLANS FOR DETAILED INFORMATION

RIGHT OF WAY PLANS

SCALE: 1"=50'



STA. 3260+00 TO STA. 3275+00

COUNTY OF	ITEM NO.	SHEET NO.
MORGAN	10-126.50	R7

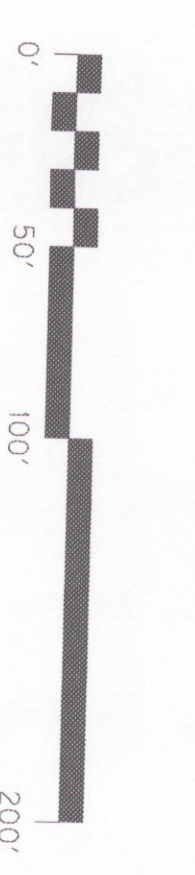
SEE CHANNEL CHANGE
NO. 1 PLANS FOR
DETAILED INFORMATION

- A) S85°08'08"W 18.95'
- B) S88°01'30"W 11.66'
- C) S83°17'25"W 20.63'
- D) S70°58'28"W 9.57'
- E) S84°28'21"W 12.51'
- F) N85°56'01"W 22.53'
- G) N77°08'52"W 22.02'
- H) S70°10'00"W 25.20'
- I) S85°35'54"W 35.85'
- J) S72°04'11"W 19.33'
- K) N53°38'20"W 25.52'
- L) S71°37'34"W 21.44'
- M) S30°46'48"W 16.76'
- N) S39°15'26"W 20.30'
- O) S08°30'23"W 17.37'
- P) S18°12'14"W 10.75'
- Q) N85°44'23"E 51.97'
- R) S70°58'28"W 2.75'
- S) S77°10'07"E 2.06'
- T) N85°44'23"E 45.04'
- U) S41°12'21"E 32.65'

JIMMY NEICE

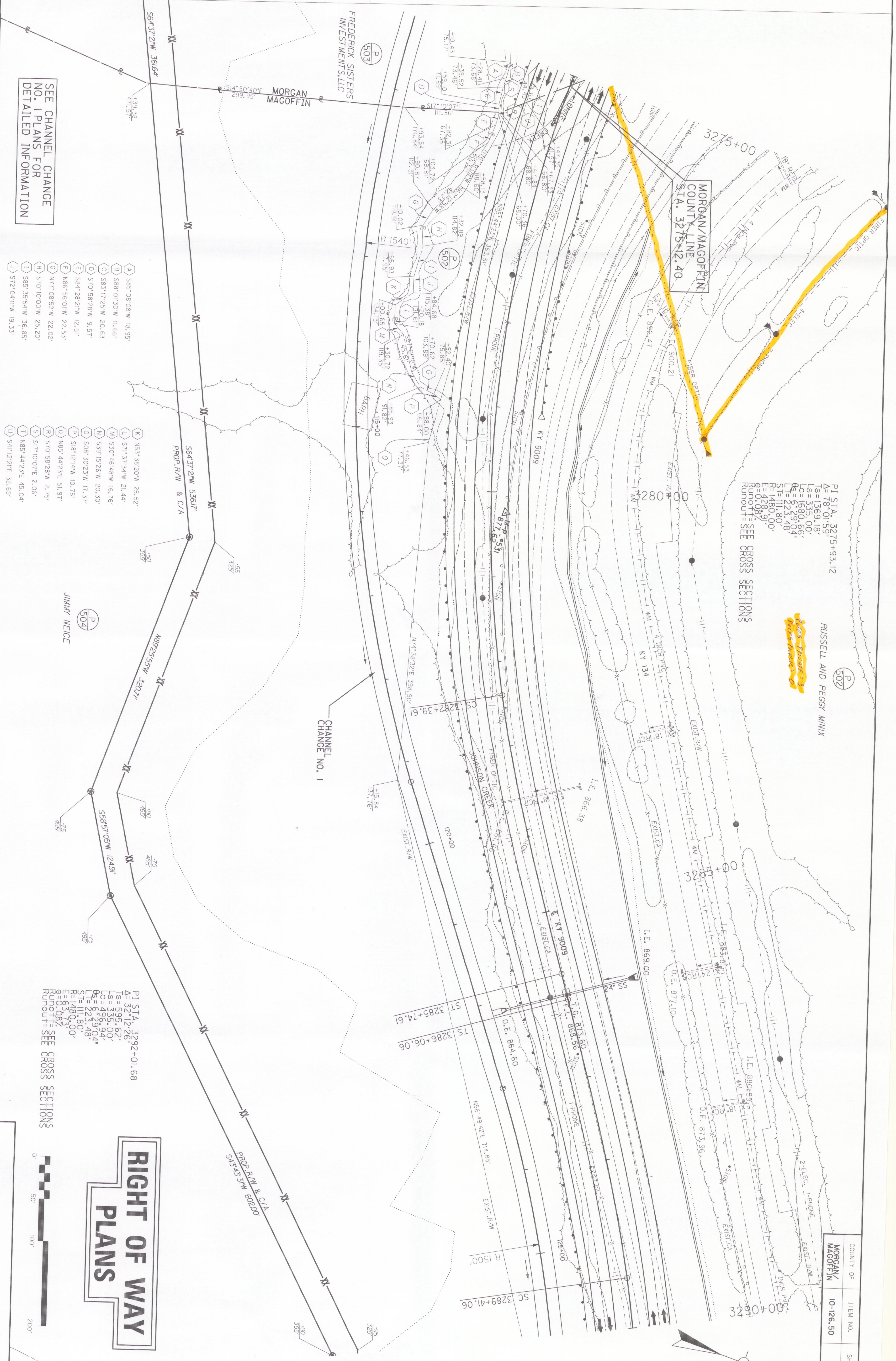
- P1 STA. 3292+01.68
- Δ= 32°12'26"
- LS= 595.62'
- LC= 335.00'
- LO= 496.94'
- OS= 6°29'04"
- LT= 223.48'
- ST= 111.80'
- R= 1480.00'
- E= 63.73'
- Runout= SEE CROSS SECTIONS

RIGHT OF WAY PLANS



SCALE: 1"=50'

STA. 3275+00 TO STA. 3290+00



MORGAN/MAGOFFIN
COUNTY LINE
STA. 3275+42.40

P1 STA. 3275+93.12
 Δ= 78°01'59"
 LS= 1369.18'
 LC= 335.00'
 LO= 1680.66'
 OS= 9°29'04"
 LT= 223.48'
 ST= 111.80'
 R= 1480.00'
 E= 63.73'
 Runout= SEE CROSS SECTIONS

RUSSELL AND PEGGY MINIX

COUNTY OF	ITEM NO.	SHEET NO.
MORGAN/MAGOFFIN	10-126.50	R9